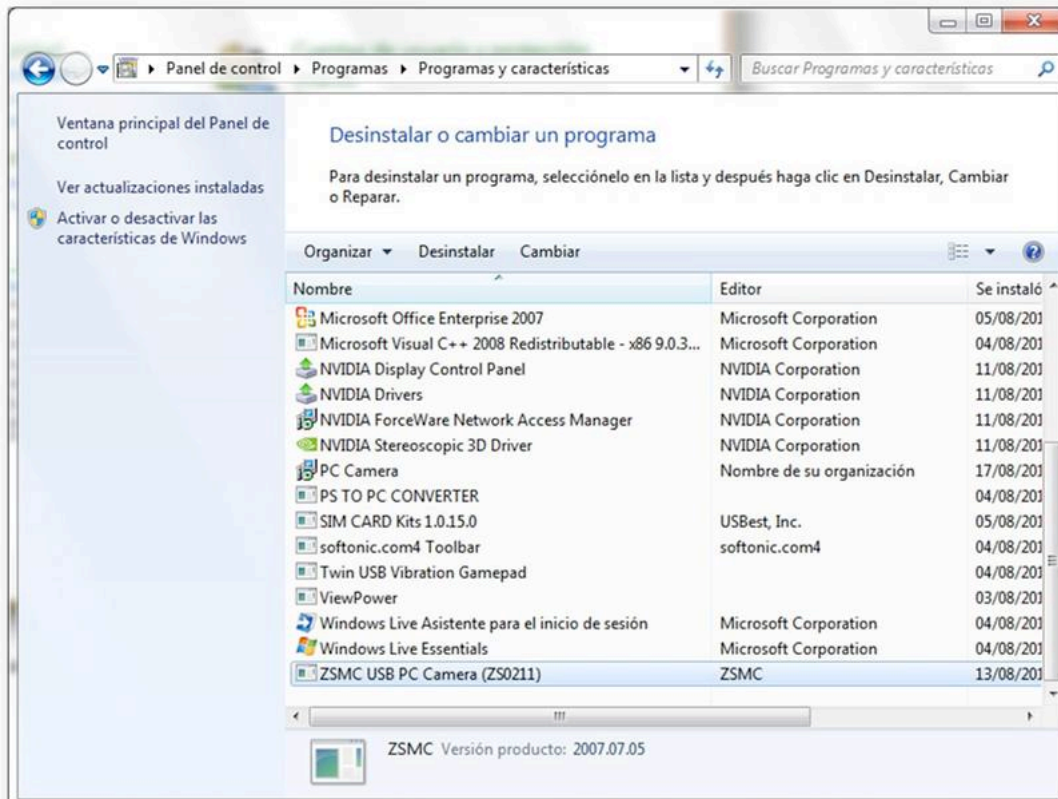


How to setup webcam combo Scorpius in Windows 7

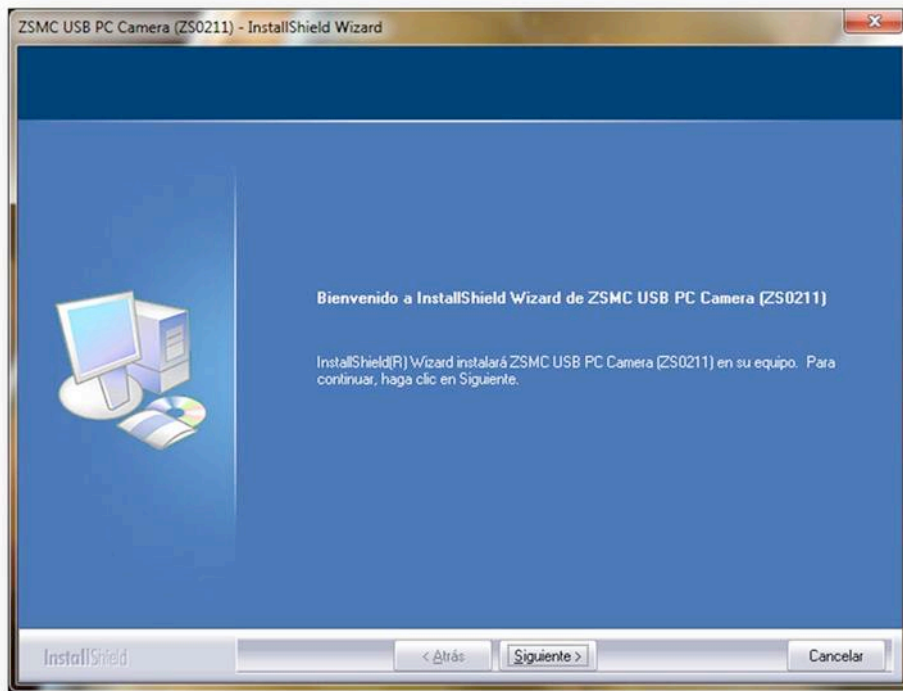
Disconnect the camera from the PC go to Control Panel and Add or Remove Programs, uninstall the drivers that have been previously installed select and click Remove.

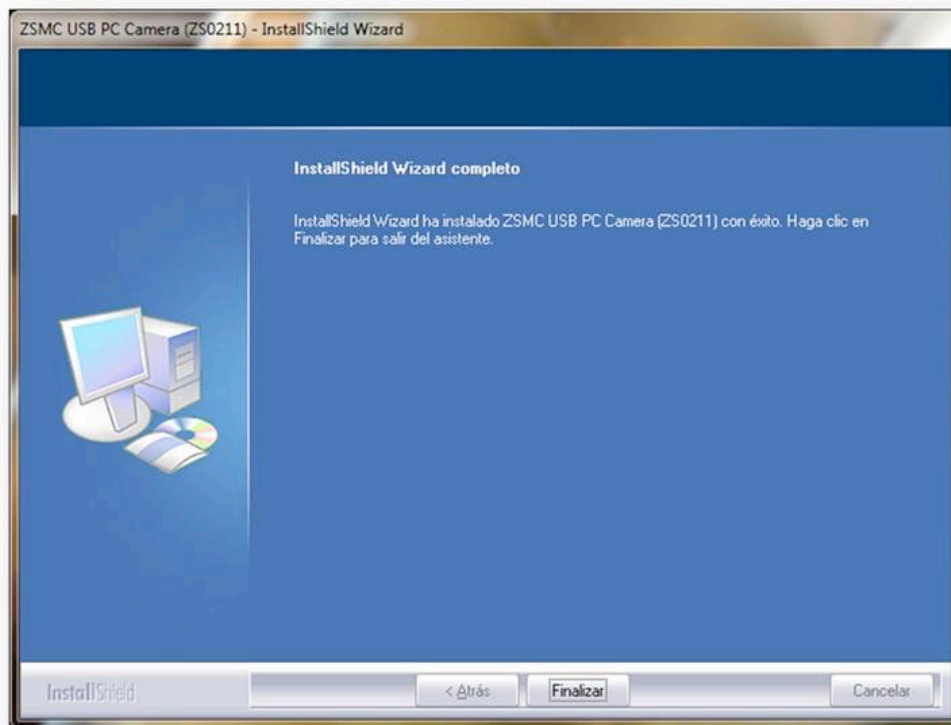
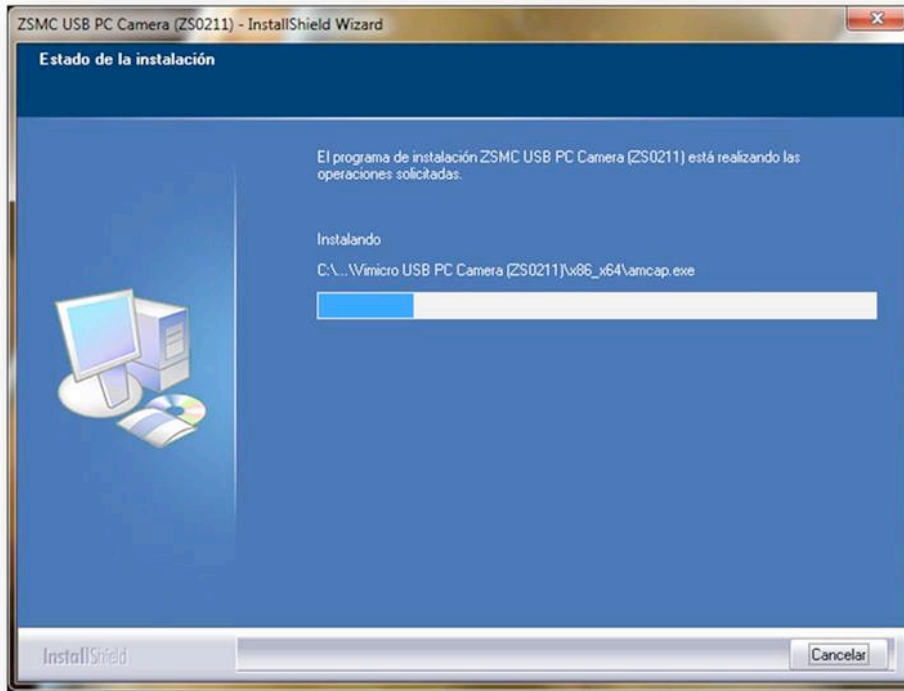


Click yes to uninstall and then finish to complete the uninstallation of the driver, and then restart the PC.

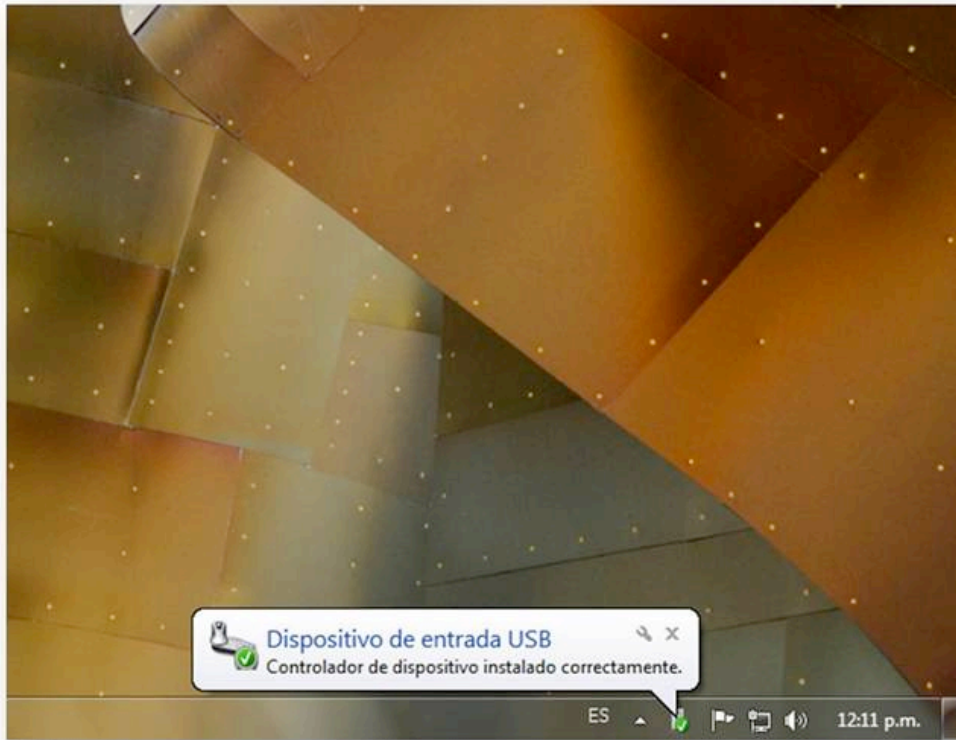


Install software installation CD or download driver Startec <http://www.mystartec.com/descargas/drivers.html> page to click next and then finish. The camera must be connected during installation of the driver.





Connected to a different USB port. By connecting the camera to the PC should be properly recognized in the taskbar.



Dispositivo de entrada USB
Controlador de dispositivo instalado correctamente.

ES 12:11 p.m.